

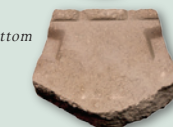
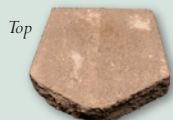


Simply refer to the chart below, select the height and length of your wall and then match it up to the number of blocks. The only thing easier is installation!

How many blocks do you need?

		WALL LENGTH		
		10' Long	15' Long	20' Long
WALL HEIGHT	8" High	20 Blocks	30 Blocks	40 Blocks
	16" High	40 Blocks	60 Blocks	80 Blocks
	24" High	60 Blocks	90 Blocks	120 Blocks

SPECIFICATIONS



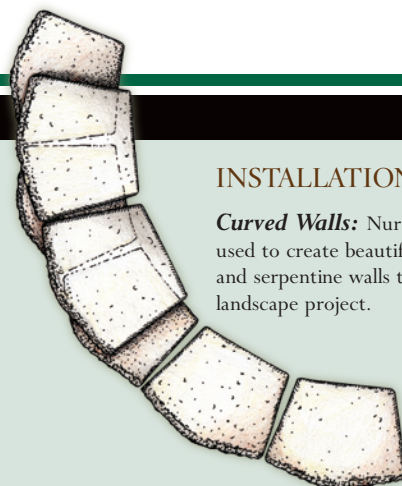
Helpful Features

1. Sidewall handholds make it easy to grip and lift the block.
2. The bottom heel enables the block to hook over the course below, securing the block and providing proper set-back.

30 Pounds
4" H: Height
12" W: Width
8" D: Depth



A LANDSCAPE SIGNATURE.



INSTALLATION OPTIONS

Curved Walls: NurseryStone can be used to create beautiful concave, convex and serpentine walls throughout your landscape project.

Manufactured or Distributed by:

NurseryStone is a licensed product of WestBlock Systems, Inc. NurseryStone and WestBlock Systems are registered trademarks of WestBlock Systems, Inc. The NurseryStone product is covered under one or more of the following patents: US D433,158, US D435,917 and US D466,288.



WestBlock Systems
P.O. Box 64685 - Tacoma, Washington 98464
1.800.332.6489



A LANDSCAPE SIGNATURE.



Adding dimension, grace and value to your home and garden.

- Ideal for walls up to 2ft. high.
- Lightweight blocks with handholds make installation, fast, safe and easy.
- Rear heel secures the block in place and provides the proper set-back with minimal effort.
- Blocks fit together snugly, eliminating gaps to ensure a finished, professional look.



WESTBLOCK SYSTEMS®

WHY NURSERYSTONE?

Install a NurseryStone landscape wall in your yard and you'll not only add beauty, but you'll also add value. Providing the rugged performance you need and the aesthetics you crave, NurseryStone is ideal for landscape walls and meandering borders. The block's natural, rough-hewn appearance and beveled design allow you to create graceful curves and patterns that guide the eye to what lies beyond.

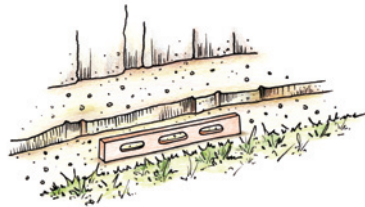


Easily Installed. Ideal for landscaped walls, NurseryStone blocks are lightweight and easy to handle. NurseryStone's solid and unique hand holds allow you to grip and lift the block with confidence. The dry-stack construction, makes installation a snap, while a snug fit insures a professional gap-free finish.

Sound Value. Economical product, easy and low cost installation, long life and minimal maintenance. Add it all up and you have a high quality product that adds dimension, grace, and value to your home and garden.

To learn more about NurseryStone and how it can help you maximize the effects of your next landscaping project, visit westblocksystems.com or call 800.332.6489.

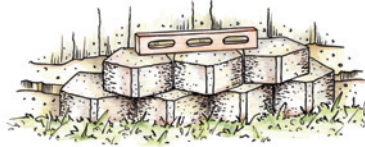
INSTALLATION



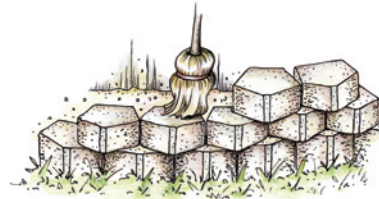
STEP 1: Begin at the lowest elevation. Determine line of wall. Dig a trench 2" deep and 12" wide. Fill depth of trench halfway with level, compacted gravel. Check for level side-to-side and front-to-back.



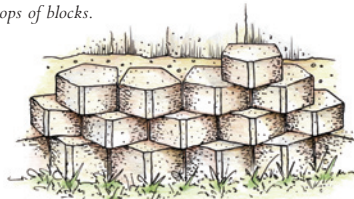
STEP 2: Install first course of blocks, leveling side-to-side and front-to-back. Fill between and behind blocks with gravel. Brush excess gravel from top of blocks.



STEP 3: Position next course of blocks, utilizing the cross bond pattern. Continue leveling from side-to-side and front-to-back.



STEP 4: On all subsequent courses, continue to fill between and behind blocks with gravel, compact the gravel, check blocks for level and brush excess gravel from tops of blocks.



STEP 5: Finish off by landscaping surrounding area.



Tools and materials you'll need for your project:

- Shovel
- Wheelbarrow
- Level
- String Line
- Hammer
- Wooden stakes
- Hand tamper
- 3/4" minus crushed aggregate



What you should know before you begin your project:

1. Soil conditions, land slope and water table will affect final design.
2. Walls require a minimum of 2" of gravel base.
3. NurseryStone is suitable for walls up to two (2) feet in height.
4. How many blocks do you need? Multiply the square footage of your wall by 3. To determine the square footage of your wall, multiply length x height.
5. A minimum of one-half of the first course of block should be placed below grade line of the soil.