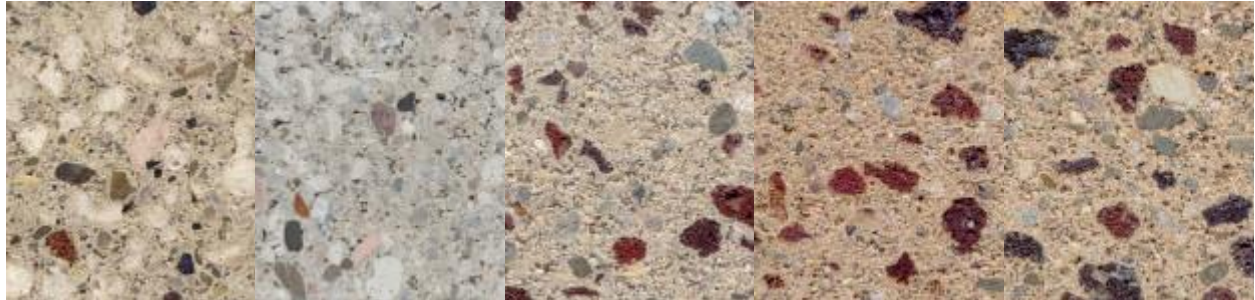




Concrete Masonry Color Samples

Burnished Concrete Masonry Units (CMU)



04-101

64-101

60-101

60B402A

60B402C

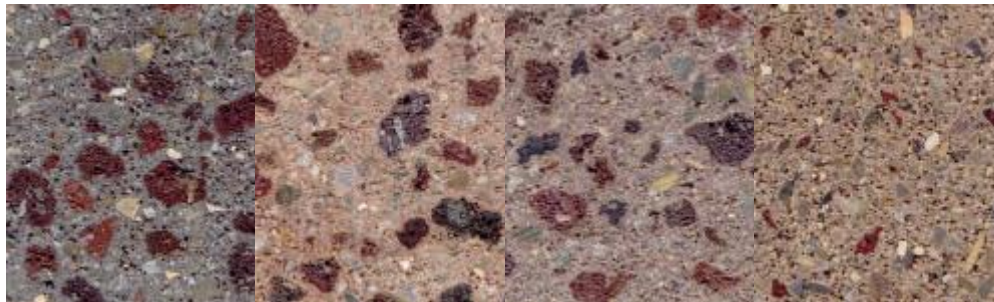


78-101

60B611D

60B607E7

60B402D



60B407E

60B610C

60B613E

60B59804B



82B90914B75

82B59804B

82B401C

82-101



Concrete Masonry Color Samples

Precision CMU



60-101

60B401A

60B401B

60B401C

60B402A



60B402B

60B402C

60B402D

60B403A

60B403B



60B403C

60B404A

60B404B

60B404C

60B407A



60B407C

60B541C

60B607E7

60B609G

60B610C

(continued on next page)

Precision CMU (continued)



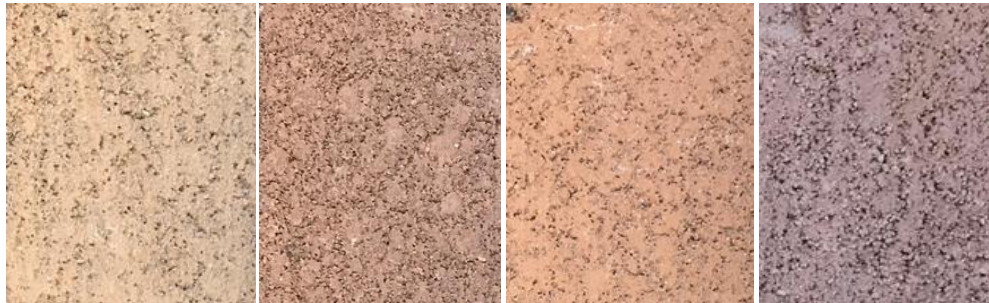
60B611D

60B612E

60B613E

60B58904B

78-101



60C670C

60C680D5

60C604E

60B620C

Slump CMU



ADOBE

GREY

TAN

Split-Face CMU

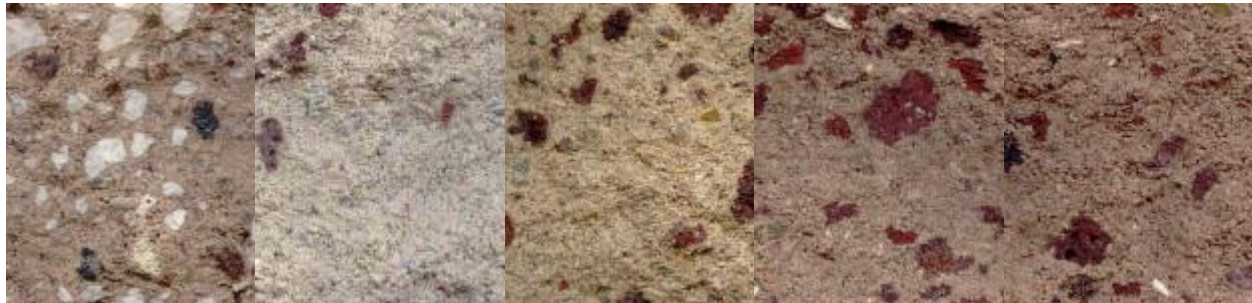


04-101

04B407A

04B407C

60B620C



20B59804B

60-101

60B401A

60B401B

60B401C



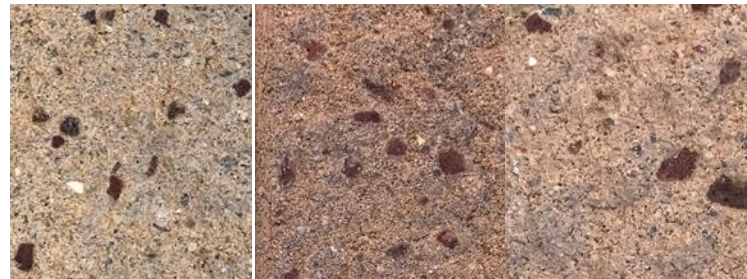
60B402A

60B402B

60B402C

60B402D

60B403A



60C670C

60C680D5

60C604E

(continued on next page)

Split-Face CMU (continued)



60B403B

60B403C

60B404A

60B404B

60B404C



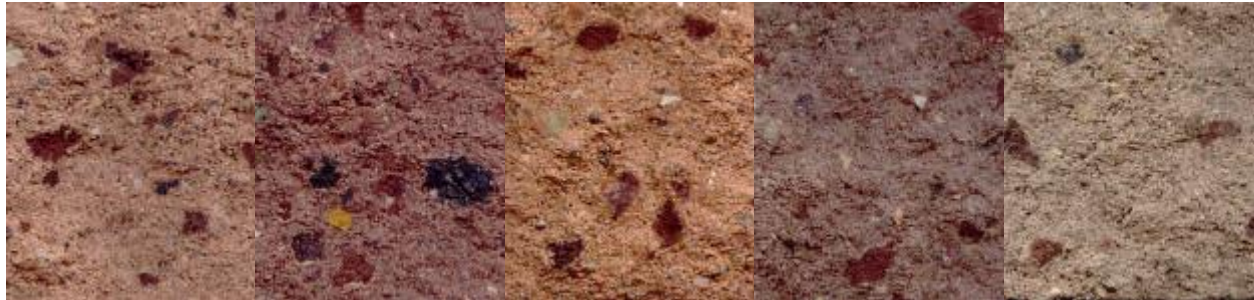
60B407A

60B407C

60B541C

60B607E7

60B609G



60B610C

60B611D

60B612E

60B613E

60B59804



64-101

82B407A

82B407C

82-101

78-101

Mason Mix Mortar Colors

Air Vol stocks Mason Mix Type “S” mortar in Natural Gray (#60-101) and Nutan (#5026A). Other colors are available via special order.

