



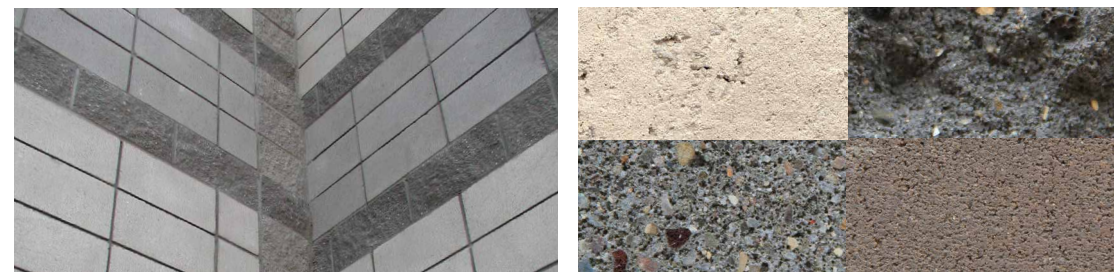
# ARCHITECTURAL CONCRETE MASONRY

[SAN LUIS OBISPO]



# OUR STORY

In business since 1962, Air Vol Block has grown with the masonry industry by focusing upon customer service, product innovation, and product quality. While we manufacture a complete line of concrete masonry units including Precision, Split-Face and Burnished CMU as well as Slump Block, we have garnered an outstanding reputation as the go-to manufacturer for specialty shapes and sizes. We are continually upgrading our manufacturing facilities to better serve the needs of our customers.



## TABLE OF CONTENTS

CMU ADVANTAGES | 4

CMU SHAPES | 6

4-INCH

6-INCH

8-INCH

12-INCH

CMU COLORS | 9

BURNISHED

PRECISION

SPLIT FACE

SLUMP

MORTAR COLORS | 17

CMU TEXTURES | 17

VISIT OUR  
**SHOWROOM!**

MONDAY - FRIDAY: 7AM - 5PM  
SATURDAY: 8AM - 12PM



## CONCRETE MASONRY

# CMU HAS MORE ADVANTAGES THAN YOU CAN IMAGINE

### MOISTURE PROTECTION & EFFLORESCENCE CONTROL

When it comes to moisture protection, you can specify an Integral Water Repellent (IWR) in both Air Vol Block block and mortar. During the manufacturing process we use Integral Water Repellent admixtures that are mixed throughout the concrete. The IWR increases resistance to wind-driven rain, moisture penetration, and reduces efflorescence.

### COLORS & TEXTURES

Turn ordinary into a visual masterpiece by blending Air Vol Block colors, surface textures, sizes and shapes. We offer a large selection of Standard, Premium and special order colors that are available in Precision, Burnished and Split Face textures. Speak with your local product expert to get samples.

### RESILIENCY

Buildings and structures with resilient design and materials can recover quicker following disasters, reduce green house emissions and improve the impacts of a building on the health and performance of occupants. Concrete masonry construction has inherent strength, durability, longevity, fire resistance, seismic and blast resistance all of which contribute to the resiliency of the built environment and can contribute to LEED credits

### SHAPES & SIZES

Create unique and memorable design details with Air Vol Block's variety of concrete masonry sizes and shapes.

### THERMAL PERFORMANCE

Concrete masonry delivers excellent thermal performance. Fully grouted concrete masonry is considered a heavy mass wall according to California Energy Code. Because of this, a typical fully grouted wall system meets energy code standards without the need for insulation in many California climate zones.

## SPECIFY WITH CONFIDENCE

All our products are manufactured to meet or exceed CMU manufacturing standards for strength and durability. Our commitment to providing high-quality products and excellent customer service will ensure that your project will be customized to your needs.

Meet with one of Air Vol Block's CMU experts to help with your project, from the initial planning stages through final engineering and approval.



#### REQUEST SAMPLES

To request product samples visit our showroom or [airvolblock.com](http://airvolblock.com)



#### TECHNICAL DOCUMENTS

Looking for data sheets, specifications, Environmental Product Declarations and technical notes? Visit [airvolblock.com](http://airvolblock.com)



#### LOCALLY MADE

Every Air Vol Block CMU is proudly manufactured in our San Luis Obispo facility, allowing us to deliver precision-made products to you, wherever and whenever you need them.

Interested in exploring Air Vol Block's wide range of block products, styles and colors,

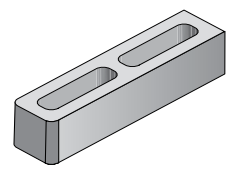
#### VISIT OUR SHOWROOM

and let our experts assist you with your next project.

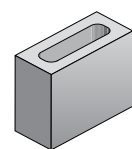


## SHAPES | 4-INCH CMU

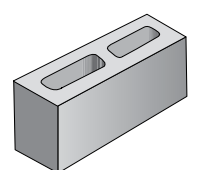
FOR MORE INFORMATION  
Visit our showroom or [airvolblock.com](http://airvolblock.com)



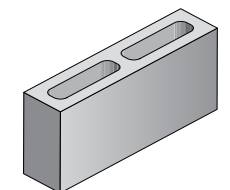
4X4X16  
STANDARD



4X4X8  
HALF

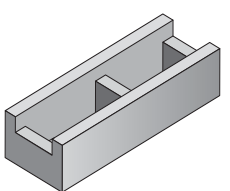


4X8X12  
CORNER

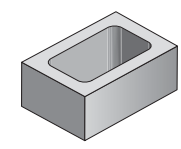


4X8X16  
STANDARD

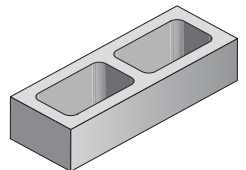
## SHAPES | 6-INCH CMU



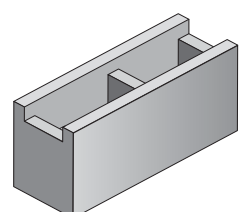
6X4X16  
BOND BEAM



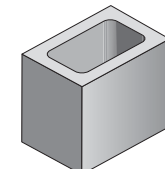
6X4X8  
HALF



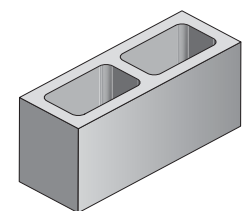
6X4X16  
STANDARD



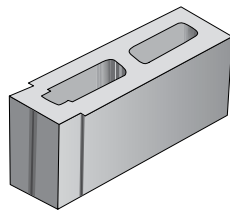
6X8X16  
BOND BEAM



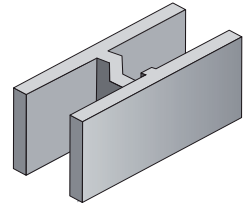
6X8X8  
HALF



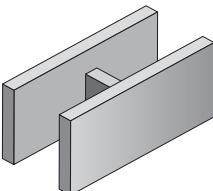
6X8X16  
STANDARD



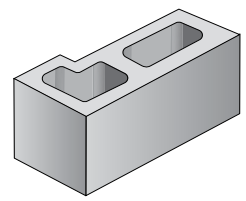
6X8X18  
TONGUE & GROOVE  
(MADE TO ORDER)



6X8X16  
DOUBLE OPEN END  
BOND BEAM  
(MADE TO ORDER)

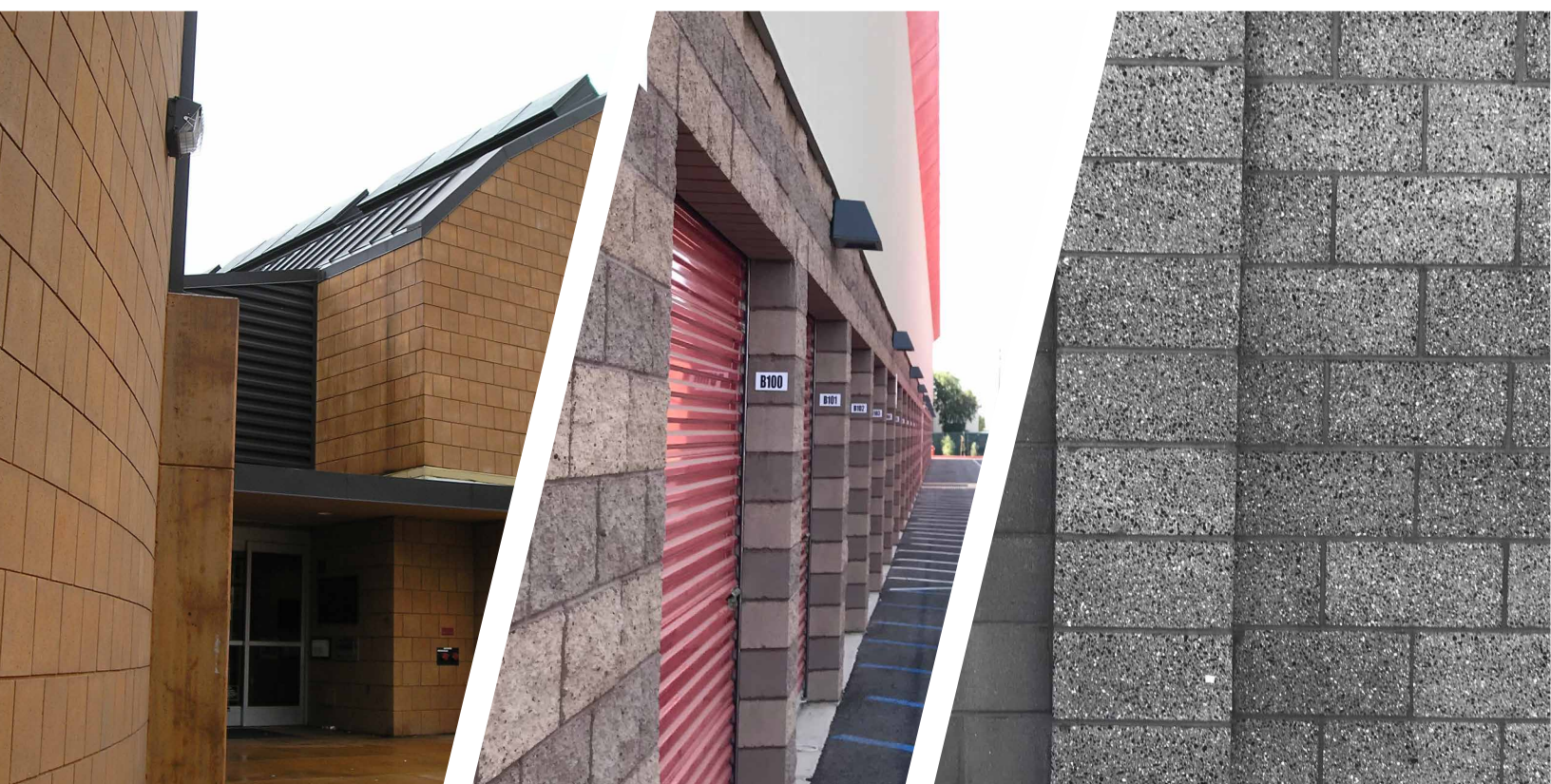


6X8X16  
SPEED BLOCK  
MORTARLESS HEAD  
JOINT



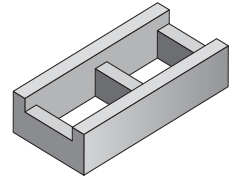
6X8X16  
RETURN CORNER

WE OFFER AN EXTENSIVE CONCRETE MASONRY PRODUCT LINE INCLUDING  
STRUCTURAL BLOCK | HARDSCAPES | MORTARS AND GROUTS

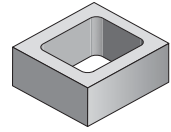


# SHAPES | 8-INCH CMU

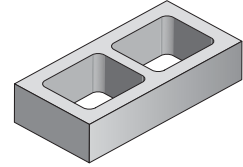
FOR MORE INFORMATION  
Visit our showroom or [airvolblock.com](http://airvolblock.com)



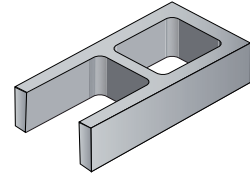
8X4X16  
BOND BEAM



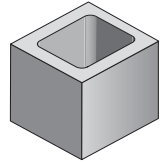
8X4X8  
HALF



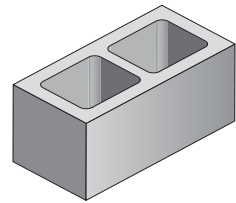
8X4X16  
STANDARD



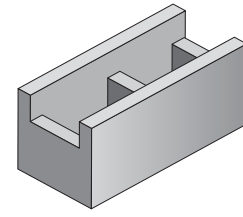
8X4X16  
OPEN END



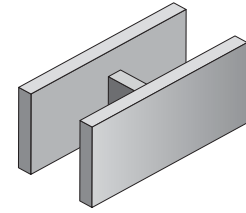
8X8X8  
HALF



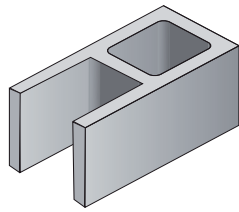
8X8X16  
STANDARD



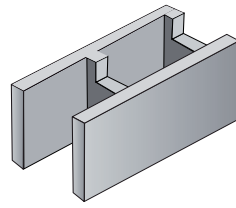
8X8X16  
BOND BEAM



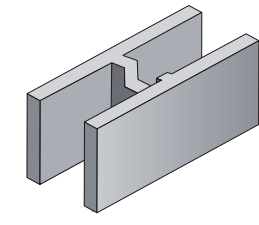
8X8X16  
SPEED BLOCK  
MORTARLESS HEAD  
JOINT



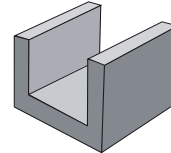
8X8X16  
OPEN END



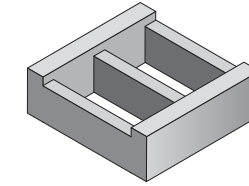
8X8X16  
OPEN END  
BOND BEAM  
(MADE TO ORDER)



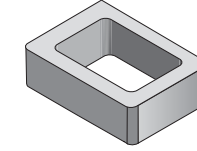
8X8X16  
DOUBLE OPEN END  
BOND BEAM



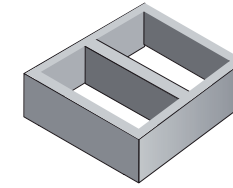
8X8X8  
LINTEL



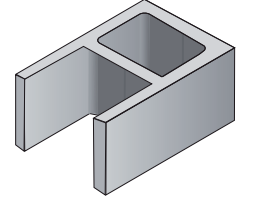
12X4X16  
BOND BEAM



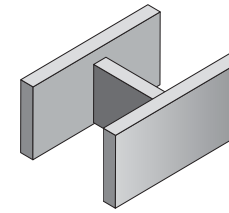
12X4X8  
HALF



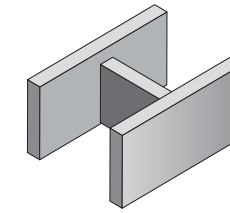
12X4X16  
STANDARD



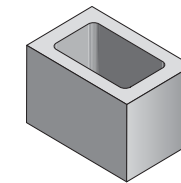
12X8X16  
STANDARD  
OPEN END



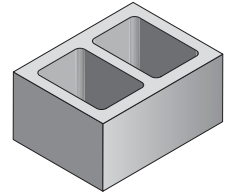
12X8X16  
SPEED BLOCK  
MORTARLESS  
HEAD JOINT



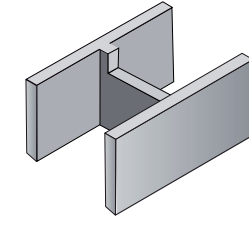
12X8X16  
BOND BEAM



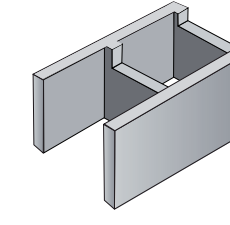
12X8X8  
HALF



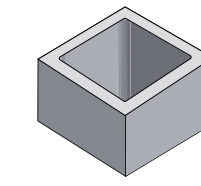
12X8X16  
STANDARD



12X8X16  
DOUBLE OPEN END  
BOND BEAM

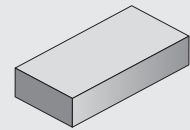


12X8X16  
OPEN END  
BOND BEAM  
(MADE TO ORDER)

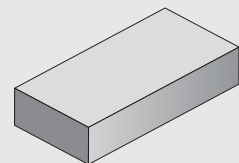


12X8X12  
COLUMN

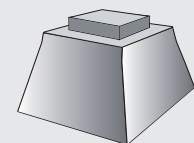
## ACCESSORY UNITS



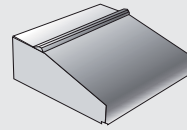
6X2X16  
CAP



8X2X16  
CAP

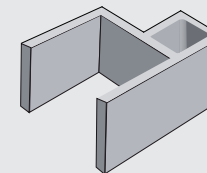


11X8X11  
PIER BLOCK

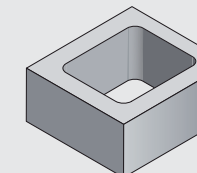


10X4X8  
SILL

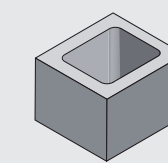
## STRUCTURAL ACCESSORY UNITS



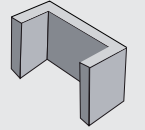
16X8X16  
BANJO PILASTER



16X8X16  
RING PILASTER



12X8X12  
RING PILASTER



8X8X16  
"C" ALTERNATE

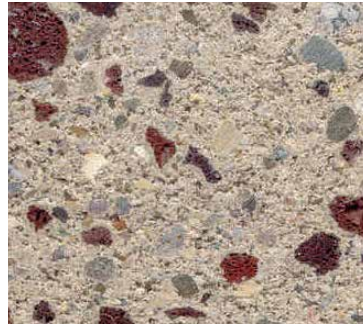
# CMU | COLORS

FOR MORE INFORMATION  
Visit our showroom or [airvolblock.com](http://airvolblock.com)

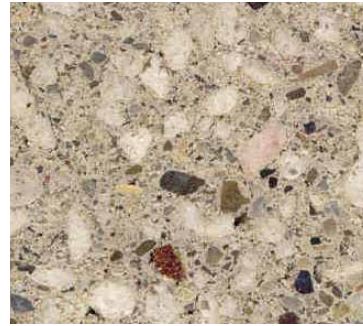
## BURNISHED



78-101



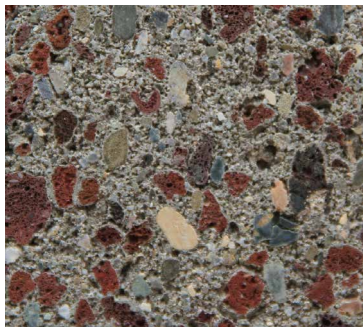
60-101



04-101



82-101



60B407A



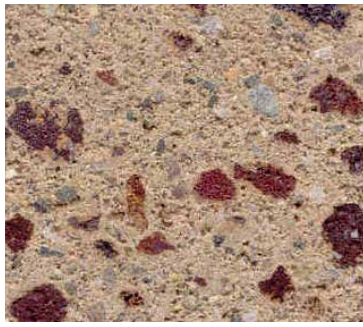
60B407C



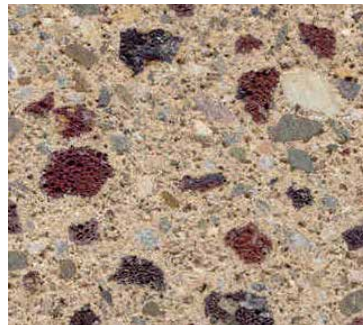
60B407E



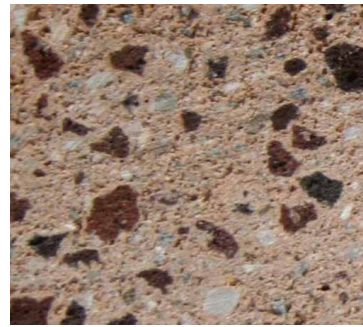
60B607E7



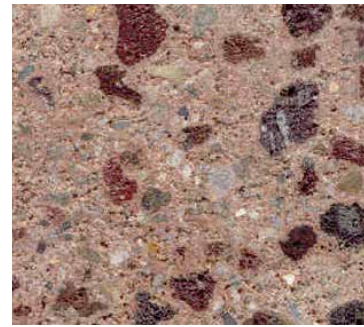
60B402A



60B402C



60B402D



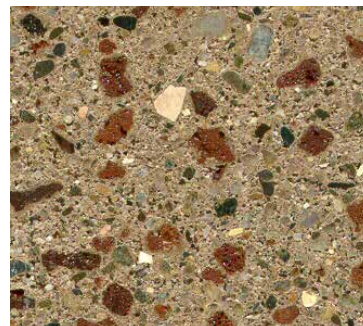
60B610C



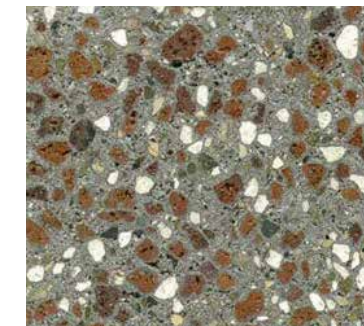
60B611D



82B90914B75



60B59804B



20B240C

# CMU | COLORS

FOR MORE INFORMATION  
Visit our showroom or [airvolblock.com](http://airvolblock.com)

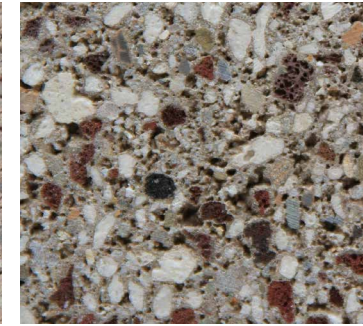
## BURNISHED



60B613E



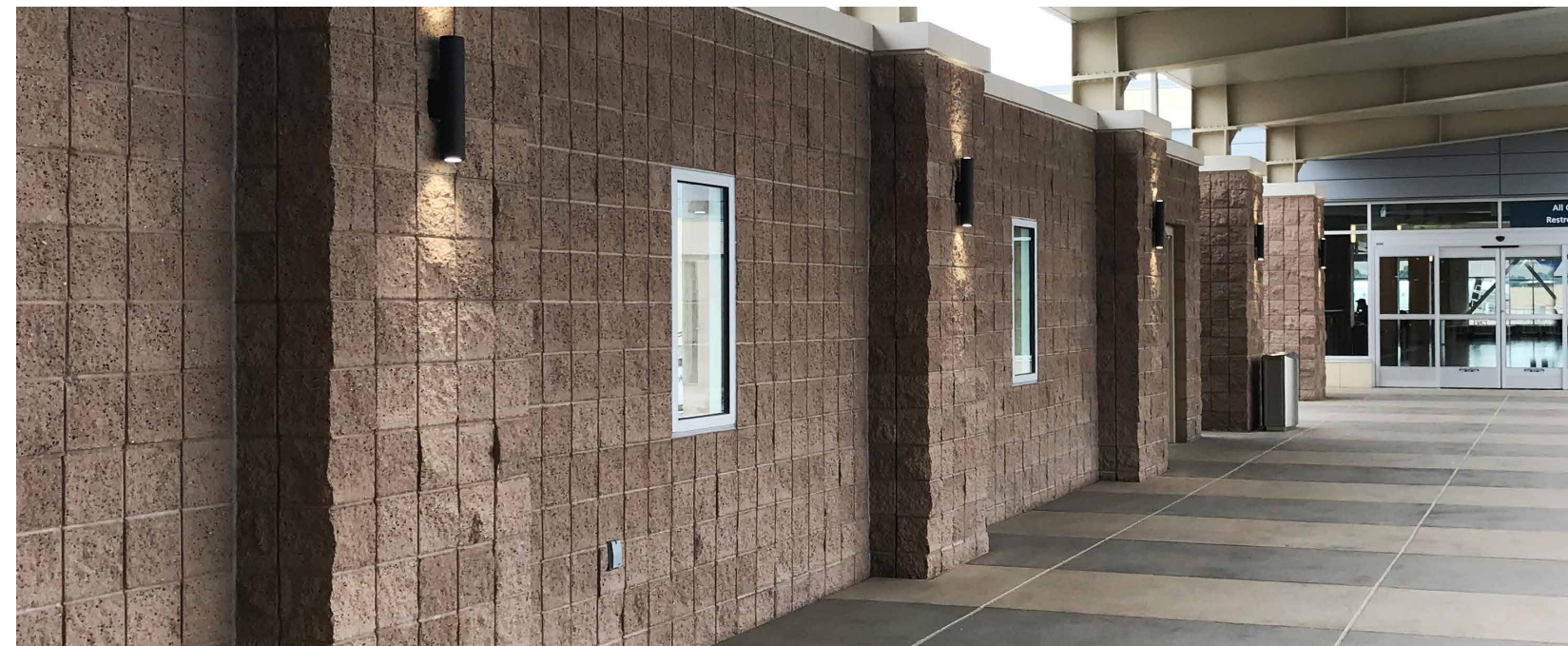
82B59804B



20B701C



82B401C



## PRECISION



60-101



60B59804B



04-5633.0032



20B404A



20B634C



20B635B5



60B401E



60B407E



60B568A



60B604D6



60B610A5



60B618D



60B620C



60B670C



68B631A



79B407E



A wide variety of custom colors may be special ordered.

Visit our [Architect's Corner | airvolblock.com](http://airvolblock.com)

or contact your Air Vol Block representative for more information regarding custom colors.

SPLIT FACE



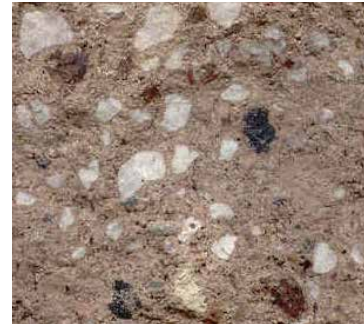
04-101



04B407A



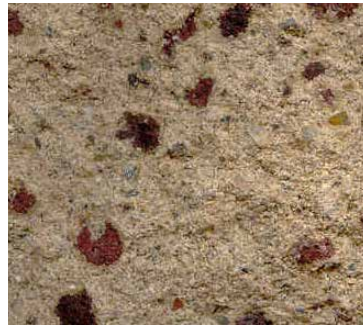
04B407C



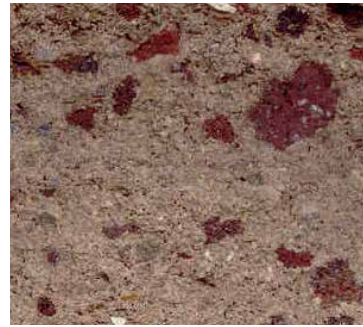
04B407C



60-101



60B401A



60B401B



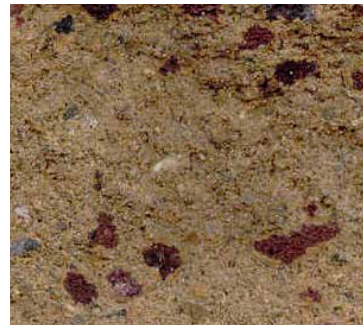
60B401C



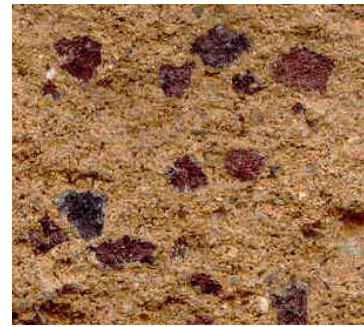
60B402A



60B402B



60B402C



60B402D



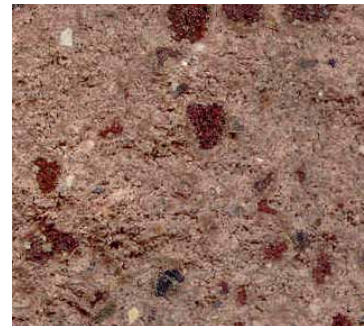
60B403A



60B403B



60B404A

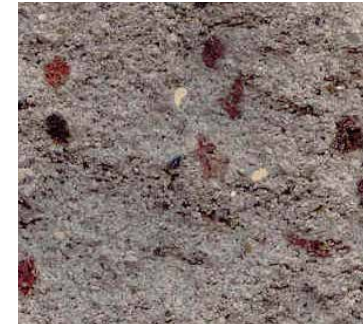


60B404B

SPLIT FACE



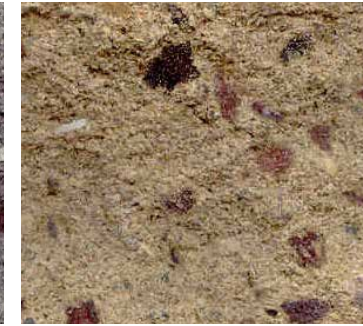
60B404C



60B407A



60B407C



60B541C



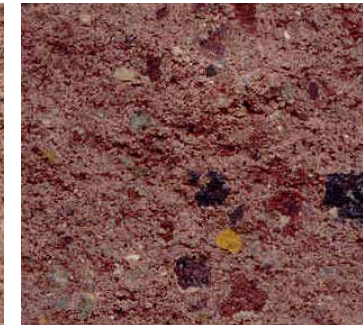
60B607E7



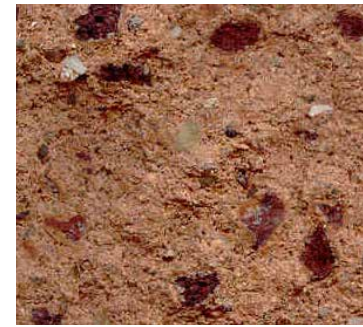
60B609G



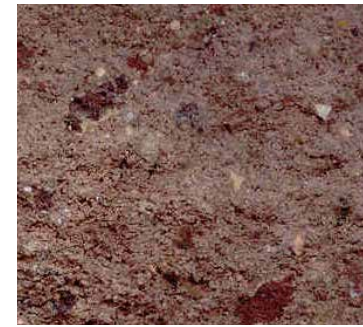
60B610C



60B611D



60B612E



60B613E



60B59804B



78-101



SPLIT FACE



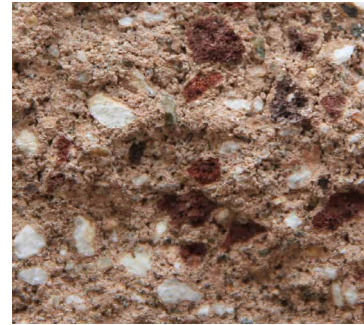
82-101



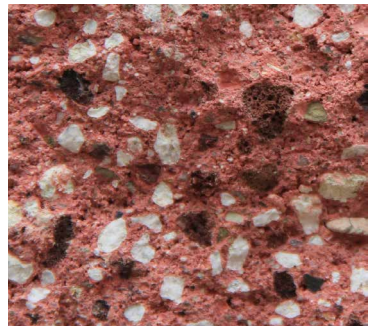
04-180C.0032



04-5663.0032



20B404A



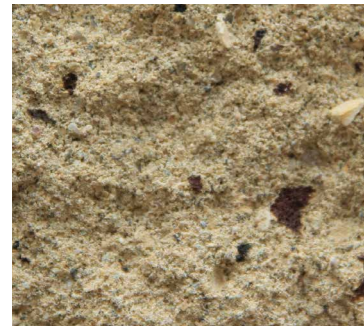
20B634C



20B635B5



60B401E



60B568A



60B604D6



60B610A5



60B618D



60B620C



68B568A



68B631A



79B407E

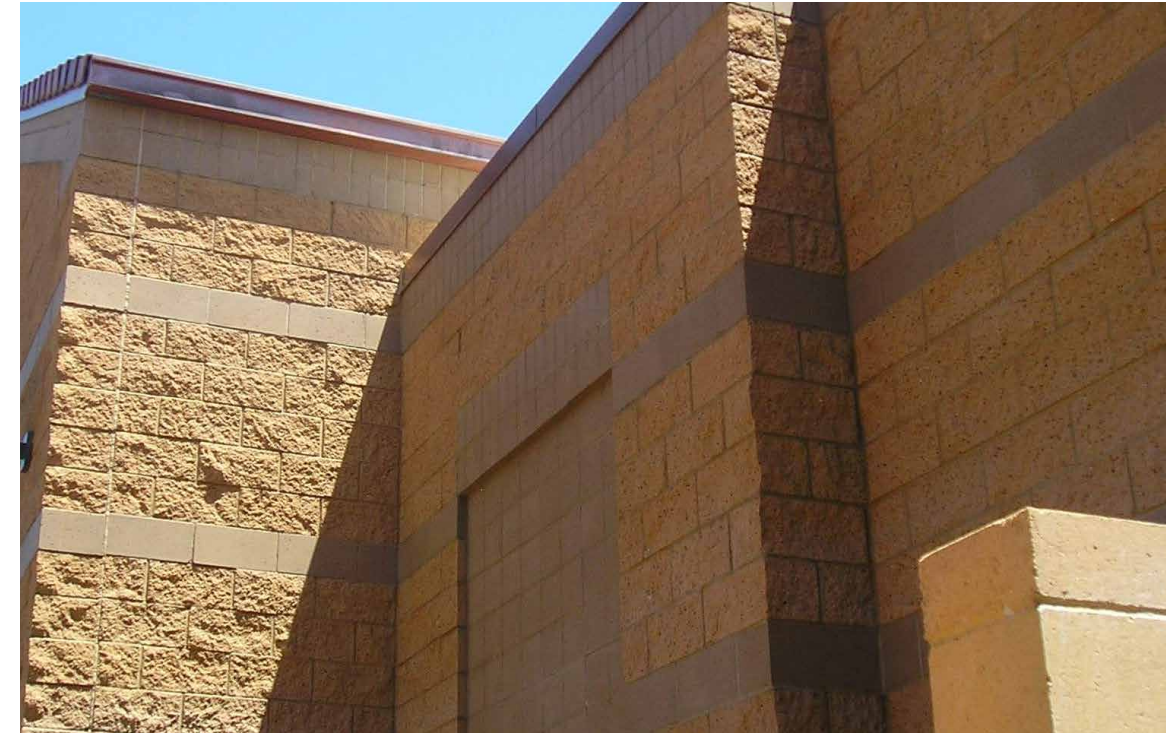


83B407A

SPLIT FACE



83B407C



SLUMP



ADOBE



GREY



TAN



141C702-D56



141C-412A

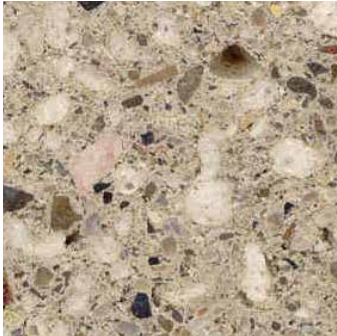
# MORTAR | COLORS

FOR MORE INFORMATION  
Visit our showroom or [airvolblock.com](http://airvolblock.com)



# CMU | TEXTURES

**BURNISHED**



**PRECISION**



**SPLIT FACE**



**SLUMP**





1 Suburban Road  
San Luis Obispo, CA  
805-543-1314

Monday – Friday: 7AM - 5PM | Saturday: 8AM - 12PM

[AIRVOLBLOCK.COM](http://AIRVOLBLOCK.COM)

©2024 Air Vol Block